

# it's a wash...

Age or weather your piece to create depth and feeling with the use of a colour wash.



A "wash" is a painting technique in which a paint brush is used to apply diluted liquid paint to a prepared surface, resulting in a smooth, semi-transparent colour overlay, ideally free of brush strokes.

What You Need:

- Pre-readied piece – we are using a resin cast skull which was lightly pigmented whilst casting (Burnt Umber).
- Paint colour of choice – we have chosen Sepia Oil Colour
- Compatible diluent (thinning agent) for paint – oil paint is diluted with white spirits. If using acrylic colour, dilute with distilled water or Iso Alcohol
- Paint Brush
- Cotton Bud



FIG 1

Prepare your piece. If you are not using a pre-pigmented cast, apply your base colour and allow drying. (Fig 1)

Place some paint onto a palette, add your diluent (thinning agent) and mix to a very thin watery consistency. (Fig 2)

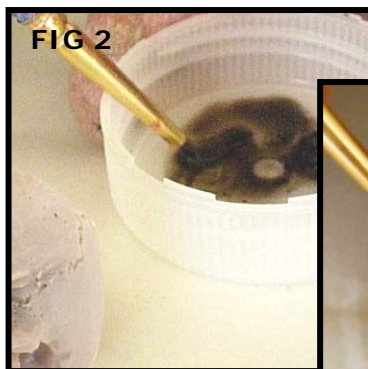


FIG 2

Flood fills all crevices and cracks with the watery paint mixture. Then apply a thin coat over the entire piece. (Fig 3)

Use a cotton bud to wipe away the paint to leave a very thin transparent layer over the entire piece. (Fig 4)

Repeat the process if more depth of colour (aging) is desired. (Fig 5)

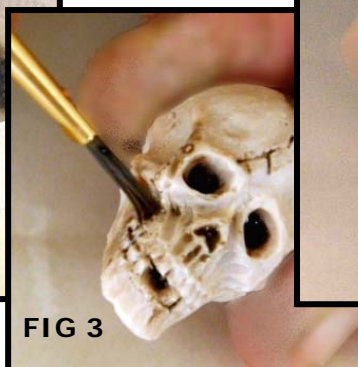


FIG 3

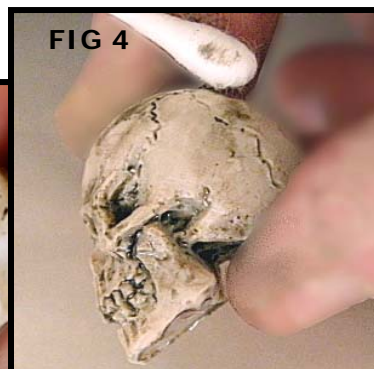


FIG 4



FIG 5